

PROCEDURE DI EMERGENZA

MANTIENI LA CALMA

INTERROMPI IMMEDIATAMENTE OGNI ATTIVITA'

LASCIA TUTTO L'EQUIPAGGIAMENTO

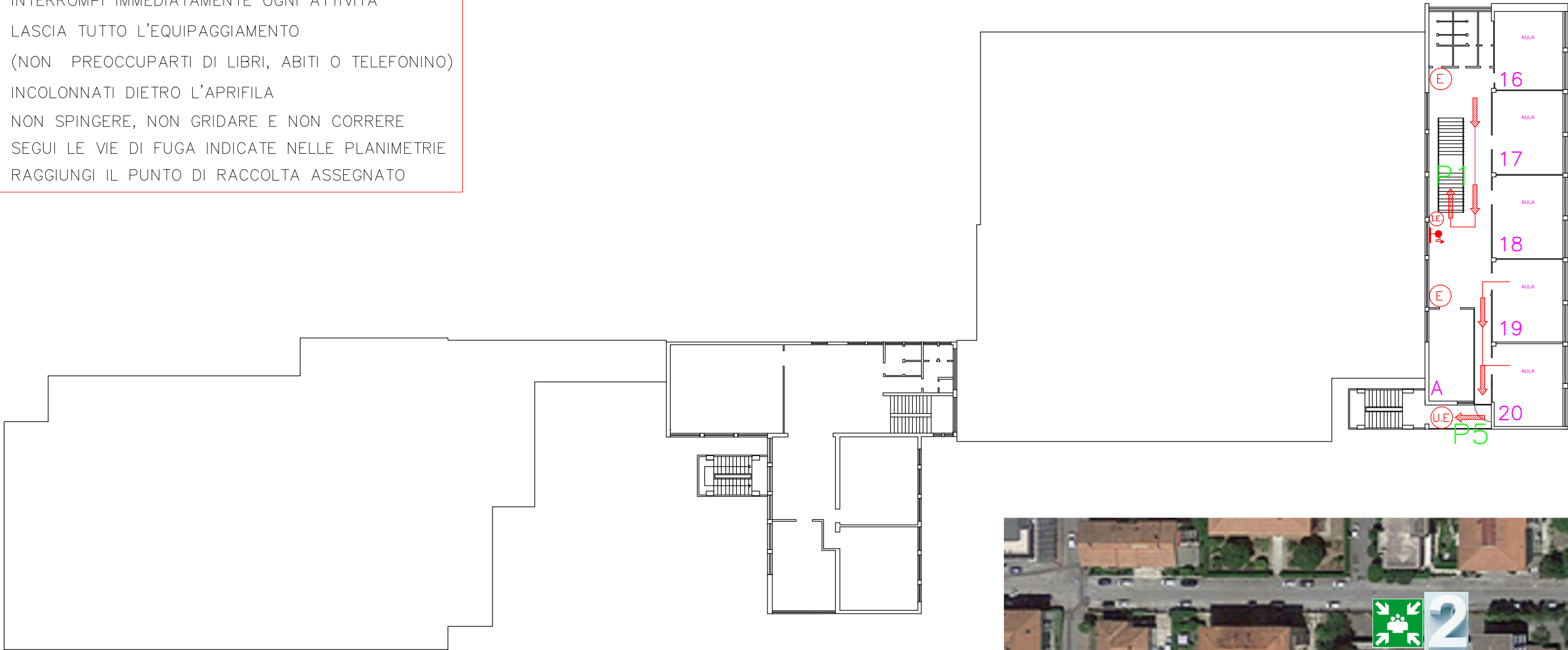
(NON PREOCCUPARTI DI LIBRI, ABITI O TELEFONINO)










INCOLONNATI DIETRO L'APRIFILA

NON SPINGERE, NON GRIDARE E NON CORRERE

SEGUI LE VIE DI FUGA INDICATE NELLE PLANIMETRIE

RAGGIUNGI IL PUNTO DI RACCOLTA ASSEGNATO



LEGENDA			
IDRANTE			Punto di Raccolta
ESTINTORE			
USCITA DI EMERGENZA			Quadro Elettrico al piano s1
INTERRUTTORE EMERGENZA			
PERCORSO DI EMERGENZA			Cassetta di Primo Soccorso
			Chiamate di Emergenza

VOI SIETE QUI

YOU ARE HERE



